



Winpower Application Quick Guide



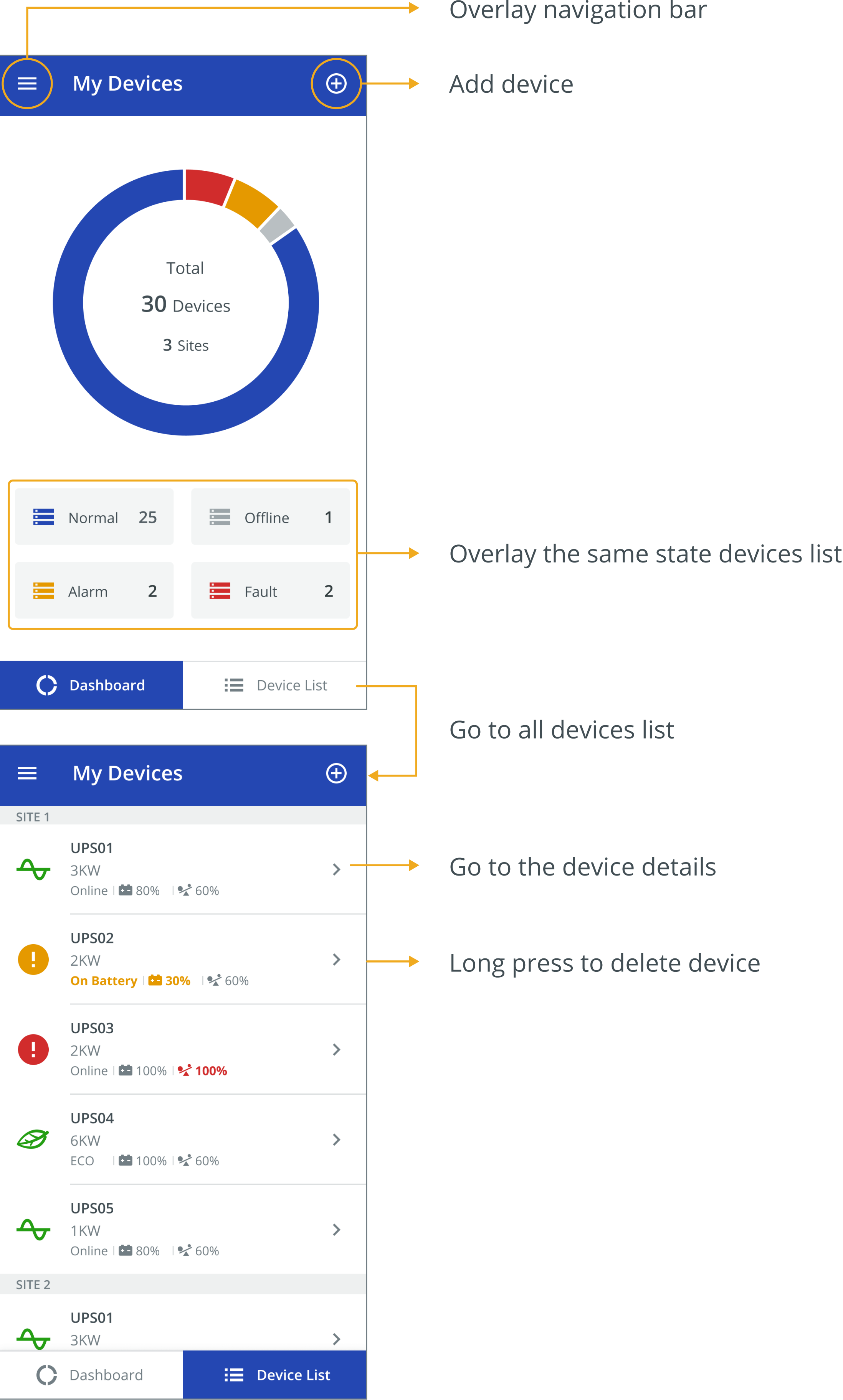
WinPower View



QR code

- the QR code for downloading and installing
- Search the WinPower View in APP store or scan
- Log in the APP
Register an account

Homepage



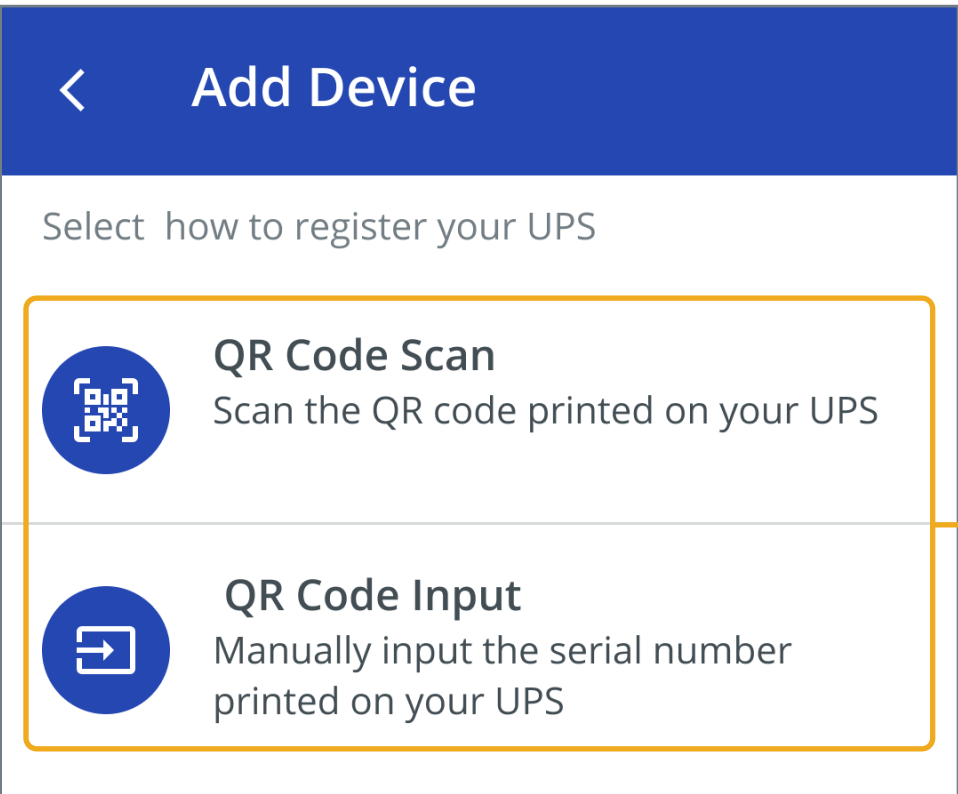
Add Device



1. Find the QR code label on the machine



2. Tap to add device

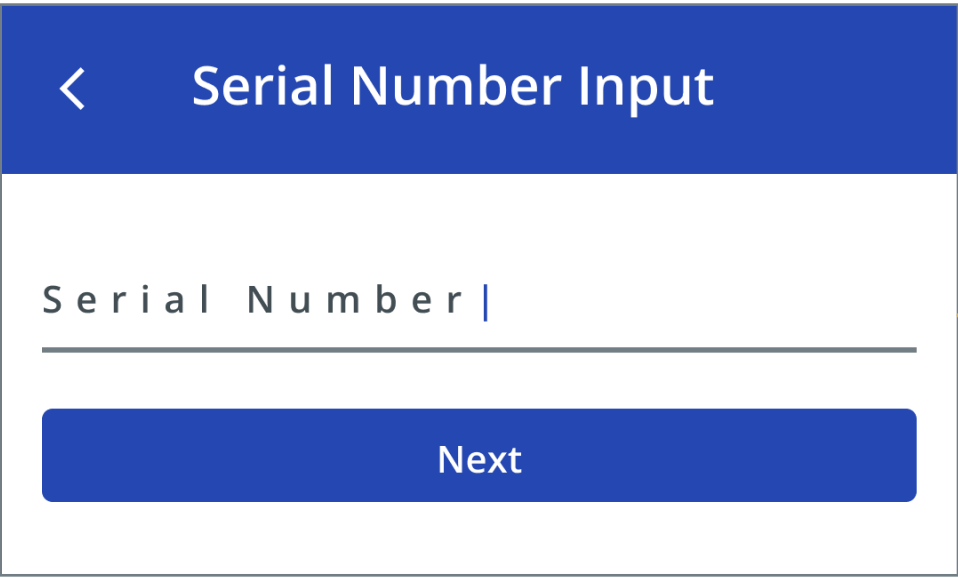


3. Select how to add device



4. Scan QR code

or



Enter the serial number

Add Device

<

Add Device

Save

Please enter the device's information.
The option with * is required.

*Name

UPS01

Description

Your UPS Model

Location

LA Office 2F Cabinet 3

*Choose site

Site 1 >

If no site or need a new site, please [create a site](#)

Note:

If want to view the device's data, it requires an active internet connection.

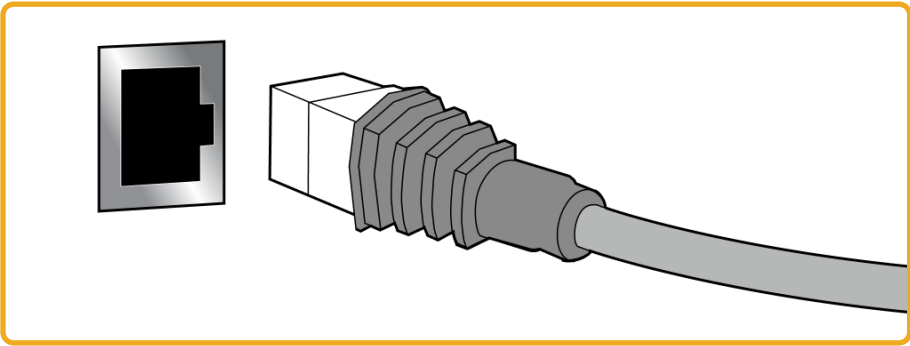
Step 1: Please check the device's network.

Step 2: Please operate the device's HMI and agree to send its data to cloud.

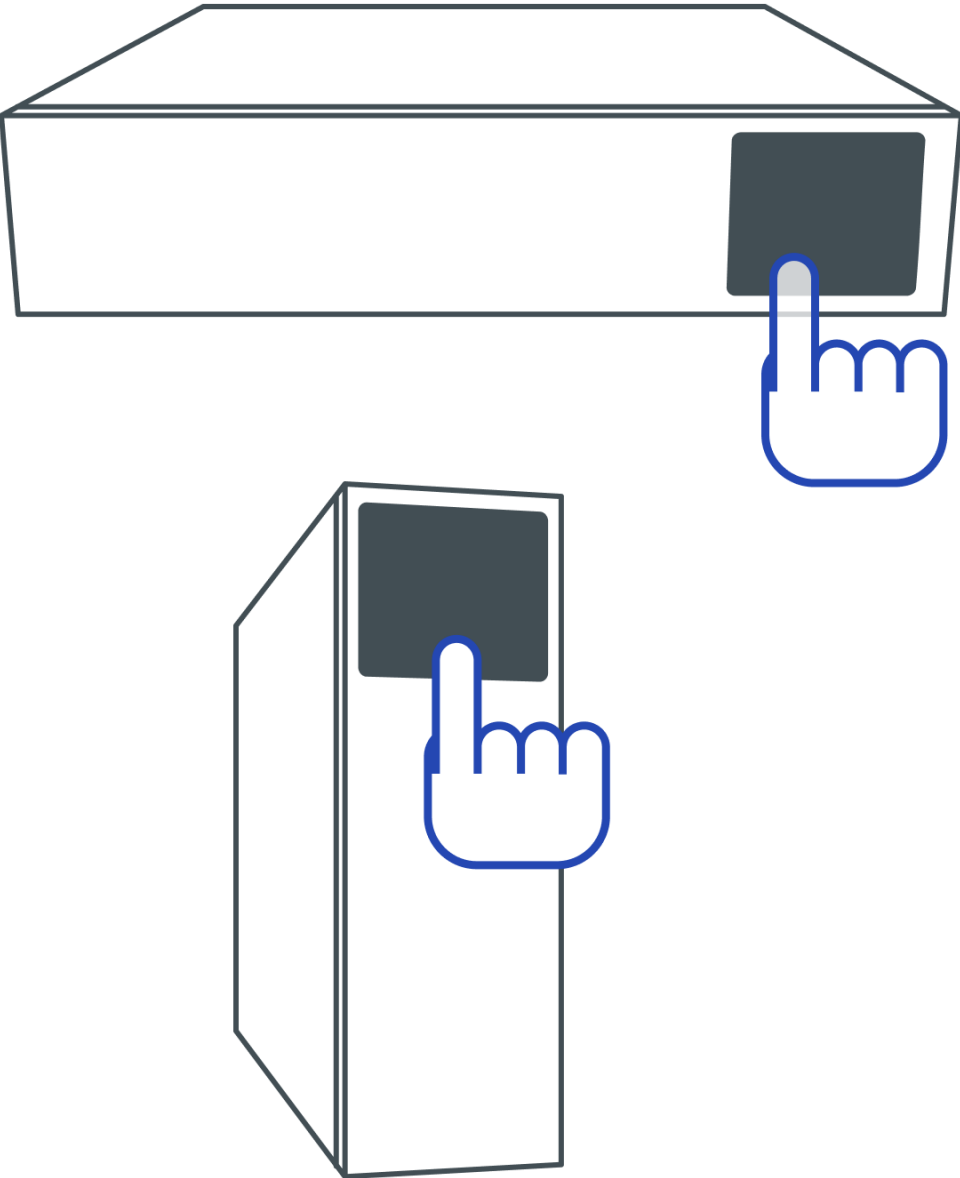
5. Edit the device's name and description

6. Choose a site or create a site

8. Save the device



9. Connect the device to the network



10. Operate device's HMI, Select IoT function enabled

Device Details

<

UPS01
Site 1

80%

Battery

70min

Online
Status

60%
Load

Load

1800W

Output

220V 50Hz 30A

Input

220V 50Hz

Load Segment 1

On

Load Segment 2

Off

Device Information

Capacity

3KVA

SN

b07f37f3-5b3c-427c

Device Description

Name

UPS01

Description

Innova Unity 3K

Location

LA Office 2F Cabinet 3

Active Alarms

None

Event Logs

Today

7days

30days

6months

12months

Remove/rename device

View device detail datas

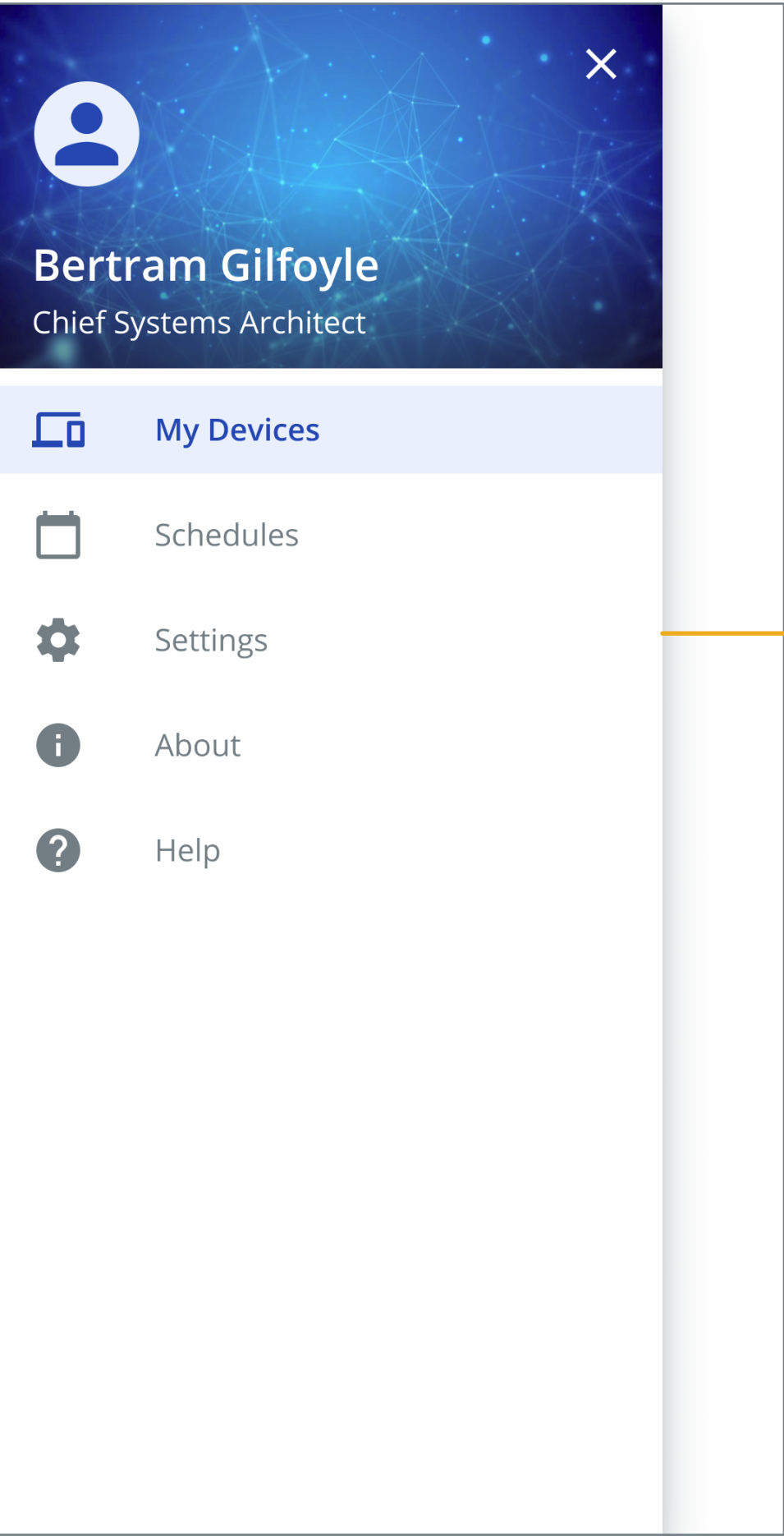
If no data, please check the device’s network and IoT status on its HMI.

Edit the device’s name and description

Navigation Bar







Tap menu icon on top left corner to overlay navigation bar



Navigate to different areas

Schedules

| Schedules | | |
|---|--|---|
|  | Battery Self-test 1 30days · Test until 50% Site 1 | > |
|  | Battery Self-test 2 30days · Quick test Site 2 · Site 3 | > |
|  | Battery Self-test 3 30days · Test for 90s Site 1. Site 2 . Site 3 . Site 4 . Site 5 | > |
|  | Battery Self-test 4 30days · Test until low Site 1. Site 2 . Site 3 . Site 4 . Site 5 | > |
| | | |



Add battery test schedule



Go to edit schedule



Long press to delete

| Edit Schedule | |
|-------------------------------------|------------------------------------|
| <div>Save</div> | |
| Name | Battery Self Test 2 |
| | |
| Start Time | <div>Dec 20, 2020 11:00 AM</div> |
| Occur | Frequency <div>2 Months</div> |
| Test Type | Battery self <div>quick test</div> |
| | |
| Devices | |
| <input checked="" type="checkbox"/> | SITE 2 |
| <input checked="" type="checkbox"/> | SITE 3 |
| <div>Add Devices</div> | |



Save the battery test schedule



Edit schedule details

Settings

Setting

My accout setting

Email

BertramGilfoyle@mail.com

Name

Bertram Gilfoyle

Phone Number

+1(724)998-0938

Language

English

Email Notifications

Critical

Mobile Notifications

Critical

Change Password

Site setting

Site 1

Site account

BG

Bertram Gilfoyle

BertramGilfoyle@mail.com

Invite a User

Site Account

Site 1

Email

BertramGilfoyle@mail.com

Name

Bertram Gilfoyle

Phone Number

+1(724)998-0938

User Access

Administrator

Administrator

Viewer

Log out or Add site

Account setting

Long press to remove or rename site

Invite/remove user

Account access control